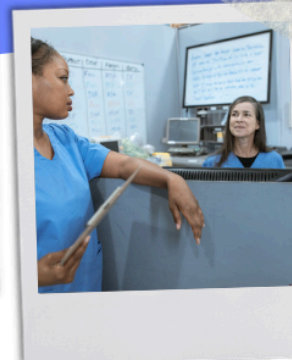




# PSRH Newsletter May 2025



—12 May 2025—



## International Nurses Day

The PSRH Board celebrates  
and thanks our nurses — Heart  
and Strength of the Pacific.



# CELEBRATING MIDWIVES: HONOURING STRENGTH IN EVERY CRISIS

The PSRH Board celebrates  
and thanks our midwives!

*On International Midwifery Day 2025,  
we celebrate the critical role midwives  
play across the Pacific – standing  
strong in every crisis and every  
moment of care. We also take a  
moment to honour those who have  
gone before us, leaving a legacy of  
dedication and service.*

## MESSAGE FROM THE PSRH PRESIDENT, DR TAPA FIDOW INTERNATIONAL MIDWIFERY DAY

On behalf of the Pacific Society for Reproductive Health, I extend our deepest gratitude and admiration to all midwives across our region as we celebrate International Midwifery Day 2025. This year's theme, "Midwives: Critical in Every Crisis," speaks powerfully to your role here in the Pacific. Whether working in hospitals, remote clinics, or during natural disasters, health emergencies, or daily hardships, you continue to provide life-saving care with courage, resilience, and unwavering dedication.

Today, we also pause to honour and remember the midwives who have passed away during the past year. Their service, sacrifice, and commitment to our communities will never be forgotten. They have left a legacy that lives on in every life they touched and in the profession they strengthened.

Your collective strength, resilience, and compassion continue to inspire us all. We thank you for the critical role you play – not only in times of crisis, but every single day.

With deepest respect and gratitude,  
**Dr Tapa Fidow, President, PSRH**



INTERNATIONAL  
MIDWIFERY DAY  
5<sup>TH</sup> MAY



## MESSAGE FROM THE PSRH MIDWIFERY VICE PRESIDENT, SR LITIANA TATUKIVEI

Warm Pacific greetings to all our midwives, This year's theme, "Midwives: Critical in Every Crisis," reminds us of the strength, courage, and spirit that midwives across our region carry with them every day. Whether working with limited resources, responding during disasters, or serving quietly in our communities, you are always there – guiding, supporting, and saving lives. Your work speaks not only of skill but of great heart. Today, we also remember and give thanks for the midwives who have left us in the past year. Their legacy of service continues through each one of you who carries on their work with pride and devotion. May we continue to stand strong together, upholding the honour and calling of midwifery across our beloved Pacific.

With love, respect, and gratitude,  
**Sr Litiana Tatukivei, Midwifery Vice President,  
PSRH**



# Midwifery Resources: *FREE & easy access*



## New Zealand College of Midwives

The College of Midwives offers a wealth of valuable resources for midwives including:

- Information about education events, eLearning, webinars and College publications
- And much more!



Check out the resources from the College at:

<https://www.midwife.org.nz/>

## New Zealand College of Midwives Biennial Conference is 27-29 Aug 2025 in Hamilton NZ

For more information go to the College Conference website:



<https://www.midwife-conference.org.nz/>

## International Confederation of Midwives (ICM)

ICM support midwives all over the world and has been the global voice of midwives and midwives' associations for more than 100 years. Check out their website to find more information on subjects such as:

- Upcoming international educational events
- Essential competencies
- Leadership opportunities
- Gender equality
- Human rights
- Respectful maternity care
- Mentoring
- Enabling environments
- And much more!



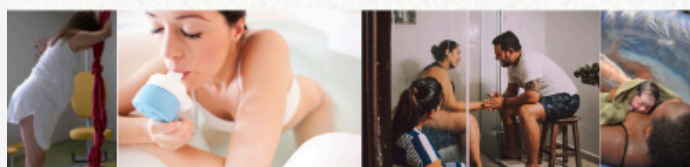
Check out the resources from ICM at:

<https://www.midwife.org.nz/>

## ICM Conference is 14-18 June 2026 in Lisbon.

For more information go to the ICM Conference website:

<https://www.midwives2026.org>



## PROFILE



# MILIANA CAKACAKA FIJI COUNTRY COORDINATOR



As a Midwife and Nurse Unit Manager of the Maternity ICU at CWMH in Fiji, I've observed significant increases in STI cases, immunocompromised individuals (ICS), and teenage pregnancies, posing major health challenges for our nation.



In my role as a PSRH coordinator, our team is actively addressing these issues through awareness programs, health promotion, and clinical services including antenatal and postnatal clinics, family planning, and general nursing support during outreach.

With the upcoming International Midwifery Day on May 5th, Fiji's midwives will be conducting awareness and health promotion activities across various branches, focusing on MotherSafe initiatives, family planning, Pap smears, and general nursing support.

I deeply appreciate the support of PSRH, which enabled my attendance at conferences in Samoa (2022) and Auckland (2024).

I am eager to continue working with PSRH as the coordinator in Fiji to combat these health challenges and promote the well-being of our communities.

I can be contacted at:  
[fjccordinator2@psrh.org.nz](mailto:fjccordinator2@psrh.org.nz)



# PACIFIC DENGUE OUTBREAK:

O&G and ICU Approaches to  
Maternal and Critical Care During  
the Current Outbreak

*Pacific Panel led by Dr Meresiana Vugawai  
and Dr William Pau'u from Fiji*

**15th May 2025.**

4pm Solomon Islands  
5pm AU (AEST)  
5pm Port Moresby  
6pm Vanuatu  
7pm Auckland & Fiji  
8pm Tonga & Samoa



*This webinar is FREE but registration is essential*



*Due Now*

# **DON'T FORGET TO JOIN OR RENEW YOUR PSRH MEMBERSHIP**

*Midwives, doctors, nurses,  
and allied health  
professionals: Join PSRH to  
connect with a network  
focused on professional  
growth, collaboration, and  
advocating for better  
reproductive healthcare in  
the Pacific. Your membership  
or donation directly fuels  
education, sign up or donate  
today to empower local  
health professionals and  
improve health outcomes.*



***Join PSRH for 2025!***

***Scan the QR code or click the clock icon to sign up on our  
website.***



# Thank You

PSRH IS SO GRATEFUL TO HAVE HAD  
PROF NEVILLE HACKER SHARE HIS  
VALUABLE EXPERTISE AND  
KNOWLEDGE AT THE APRIL WEBINAR  
AND DR AI LING TAN & DR NANISE  
SIKITI FOR THEIR VALUABLE  
CONTRIBUTIONS



**INSTAGRAM**

**PSRH is now on Instagram.**

Follow us on Instagram to keep up to date with all PSRH education and activities

**FOLLOW US**



**Save  
the date**

**PSRH CONFERENCE  
IN TONGA  
14 - 18 SEPT  
2026**

**Contact the secretariat team:**

- [secretariat@psrh.org.nz](mailto:secretariat@psrh.org.nz).
- [volunteerkj@psrh.org.nz](mailto:volunteerkj@psrh.org.nz)
- Head of Secretariat, [amanda.noovao-hill@psrh.org.nz](mailto:amanda.noovao-hill@psrh.org.nz)

**CONTACT US**



[View email in browser](#)

[update your preferences](#) or [unsubscribe](#)